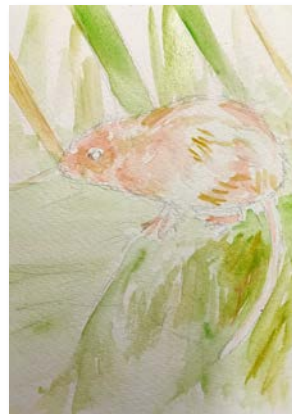
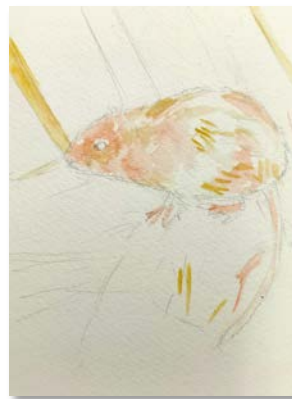




Instructions for painting a Water Vole in watercolour

1. Draw the outline shape of the Water Vole lightly in pencil.
2. Add the warm, bright areas of colour in using burnt sienna and yellow ochre. Use your brush marks in the direction of the fur and grasses.
3. Add pale green mixed with a bit of yellow ochre to all the lightest grassy areas.



4. Add burnt umber (dark brown) to the darker areas of the Water Vole. Use brush marks to show the texture and direction of the fur.
5. Work into the background with soft washes of burnt umber and grey. Less detail in the background will make it look further away.
6. Using a fine brush and darker paint, add details and shadows.
7. Add a little black paint for the eye and feet details.
8. Add Prussian blue into the shadows.

Photo credit Nick Lay Photography
Artwork ©Catherine Matthews – Artist 2021

